



- In-house engineering to offer economical nesting and sorting service
- One stop shop, just in time
- Plasma cutting of steel & aluminum plates and profiles
- Steel & aluminum profiles bending
- Steel & aluminum plates forming
- Steel preparation

Bulb Flats

Grade A-B-A36-D36



| Dimension | Kg/ml | Dimension | Kg/ml | Dimension | Kg/ml | Dimension | Kg/ml |
|-----------|-------|-----------|-------|-----------|-------|-----------|-------|
| 60x4 | 2.81 | 140x10 | 13.03 | 220x10 | 22.80 | 320x12 | 42.50 |
| 60x5 | 3.28 | 160x7 | 11.40 | 220x11 | 24.50 | 320x13 | 45.00 |
| 60x6 | 3.75 | 160x8 | 12.70 | 220x12 | 26.20 | 320x14 | 47.50 |
| 80x5 | 4.24 | 160x9 | 14.00 | 240x10 | 25.40 | 340x12 | 46.10 |
| 80x6 | 4.87 | 160x10 | 15.30 | 240x11 | 27.40 | 340x13 | 48.80 |
| 80x7 | 5.55 | 180x8 | 14.80 | 240x12 | 29.30 | 340x14 | 51.50 |
| 100x6 | 6.08 | 180x9 | 16.20 | 260x10 | 28.30 | 340x15 | 54.20 |
| 100x7 | 6.86 | 180x10 | 17.60 | 260x11 | 30.30 | 370x13 | 54.60 |
| 100x8 | 7.65 | 180x11 | 19.00 | 260x12 | 32.40 | 370x14 | 57.50 |
| 120x6 | 7.31 | 180x12 | 20.40 | 280x11 | 33.50 | 370x15 | 60.50 |
| 120x7 | 8.25 | 200x9 | 18.50 | 280x12 | 35.70 | 400x14 | 63.90 |
| 120x8 | 9.19 | 200x10 | 20.10 | 280x13 | 37.90 | 400x15 | 67.00 |
| 140x7 | 9.74 | 200x11 | 21.70 | 300x11 | 36.70 | 400x16 | 70.20 |
| 140x8 | 10.83 | 200x12 | 23.38 | 300x12 | 39.00 | 430x15 | 73.90 |
| 140x9 | 11.92 | 220x9 | 21.00 | 300x13 | 41.50 | 430x17 | 80.60 |

Inverted Angles

Grade A-B-D-A32-A36-D32-D36



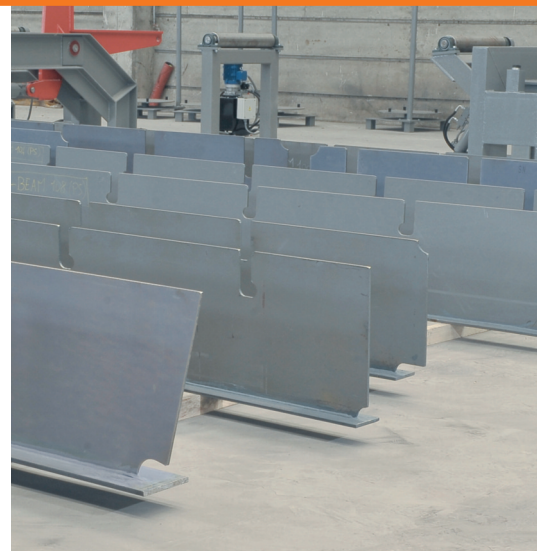
| Dimension | Kg/ml | Dimension | Kg/ml | Dimension | Kg/ml |
|--------------|-------|---------------|-------|-----------------|-------|
| 200x90x8x14 | 21.8 | 250x90x12x16 | 33.7 | 350x100x12x17 | 45.3 |
| 200x90x9x14 | 23.3 | 300x90x10x16 | 34.1 | 350x100x13x17 | 47.9 |
| 200x90x10x14 | 24.7 | 300x90x11x16 | 36.3 | 400x100x11.5x16 | 47.9 |
| 250x90x9x14 | 26.9 | 300x90x12x17 | 39.1 | 400x100x12x18 | 50.8 |
| 250x90x9x15 | 27.6 | 300x90x13x17 | 41.3 | 400x100x13x18 | 53.8 |
| 250x90x10x15 | 29.4 | 350x100x11x17 | 42.7 | 450x125x11.5x18 | 57.4 |
| 250x90x11x16 | 31.9 | | | | |

BAGLIETTO

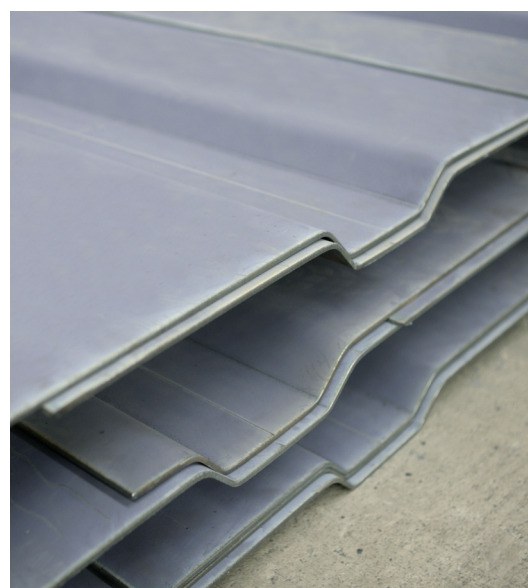
MARINE STEEL



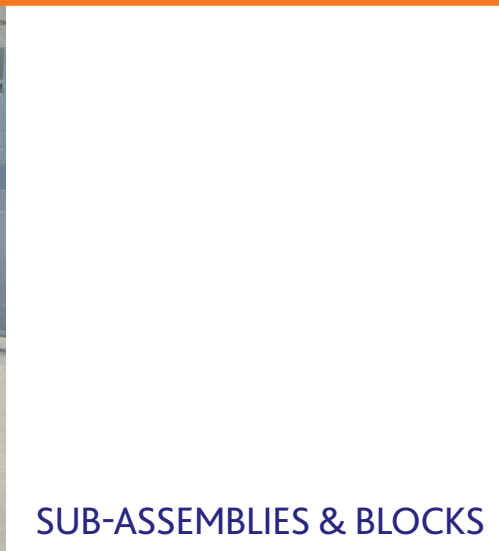
Shipbuilding
Steel & Aluminum
Service Center
Your hull in kit form



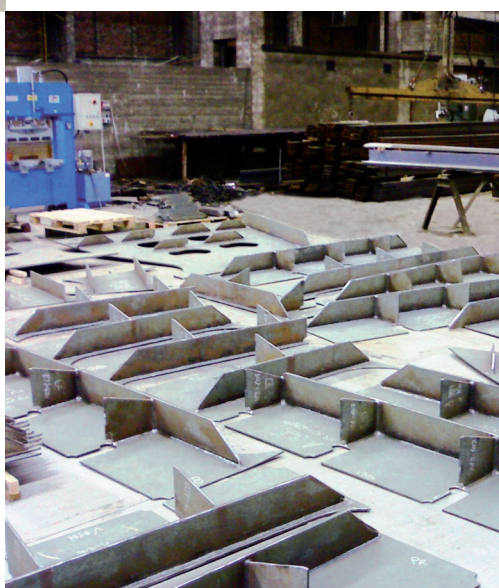
CORRUGATED PLATES
Standard 3-4-5-6 mm



WELDED BEAMS
· Max Dimensions Width 1250 mm
Height 2500 mm
· Steel Reinforcement Application

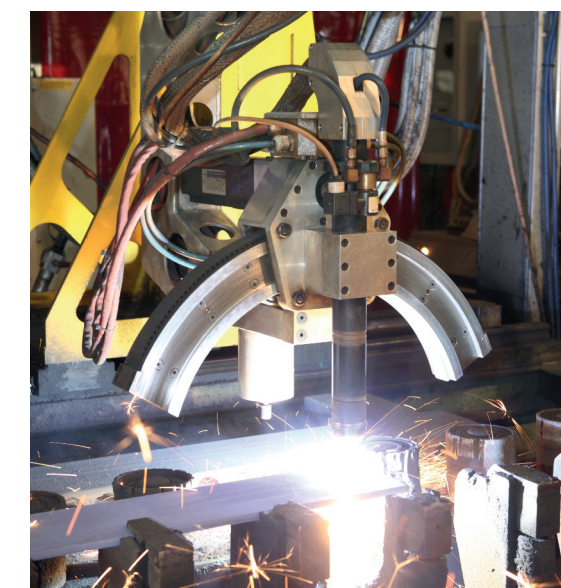


SUB-ASSEMBLIES & BLOCKS



Via Castelgazzo, 11
15067 Novi Ligure (Al) · Italy
Export Sales T +39 0143 419260
Domestic Sales T +39 0143 318000
Fax +39 0143 418840
info@baglietto.eu
www.baglietto.eu

STEEL AND ALUMINUM
ARE OUR
PASSION
SINCE 1893





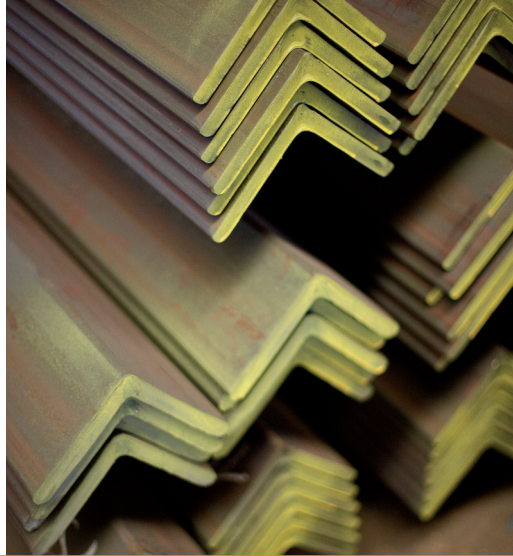
COILED STEEL PLATES
thickness from 3 mm to 12 mm width
1500mm to 2000mm



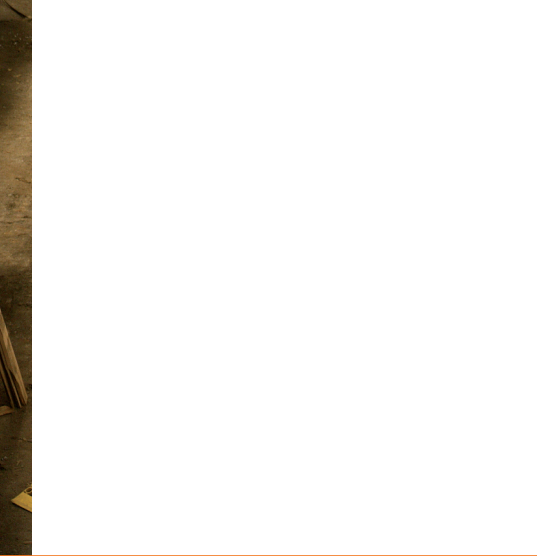
INVERTED ANGLES
Grade A-B-D-A32-A36-D32-D36
From IA 200x90x8x14
to IA 450x125x11,5x18
JIS G3192-2008

Trading Service
Your steel supplier
worldwide

FLAT BARS & WIDE FLAT BARS
Grade A-A36-D36
Quality S275JR-S355J0-S355J2 EN 10025
From 20x5 mm to 150x70 mm
UNI EN 10058
From 160x5 mm to 500x100 mm
UNI EU91
Lenght 6000 mm/12000 mm



Specialized in supplying high quality
of surface treatment
by our 2 automatic
shotblasting & coating plants



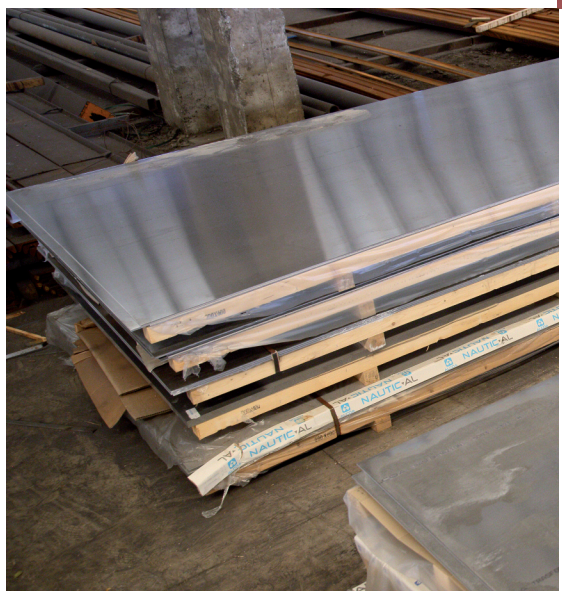
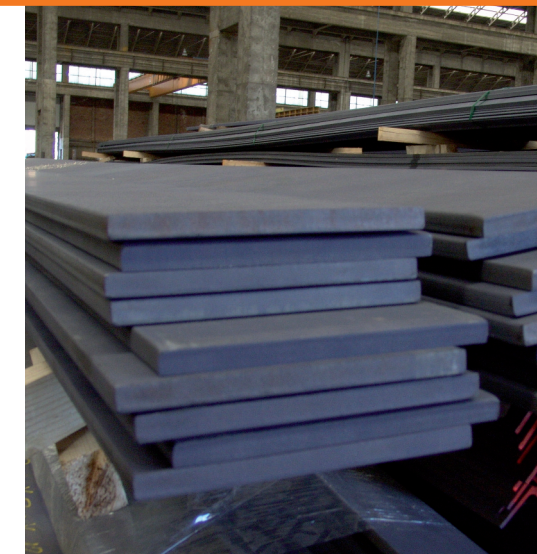
**SHIPBUILDING
ALUMINUM PLATES**
Grade 5083 H321/H111
From 3 mm to 12 mm
Width 2000 mm
Length 6000 mm



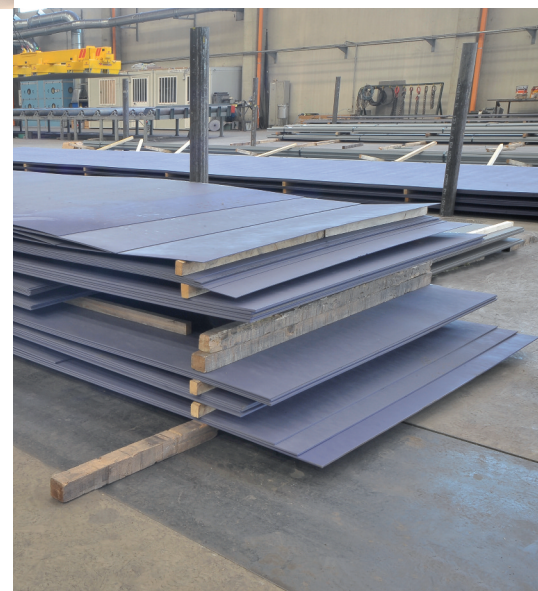
SHIPBUILDING STEEL PLATES
Grade A-A36-D36-E36
From 4 mm to 70 mm EN 10029
Width from 2000 mm to 3000 mm

Specialized in supplying from stock bulb
flats, flat bars, angles, unequal angles,
shipbuilding steel and aluminum plates,
pipes and hollow sections
with the certification approved
by the all major classification societies

**Stocking
and Commercial
Service**
Don't be shocked
we're always stocked



BULB FLATS
Grade A-A36-D36
From HP 60x4 to HP 430x17
UNI EN 10067



In-house laboratory for chemical analysis and mechanical tests
approved by RINA, LRS, BV, DNV/GL, RMRS and CRS

